



**Webb Kentrol/Sevco**

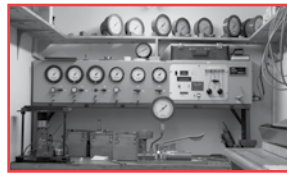
Specialists in Automated Valves, Process Controls,  
Overpressure Protection, and Engineered Systems.



# Products & Services

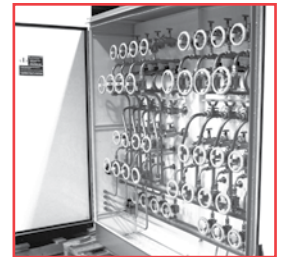
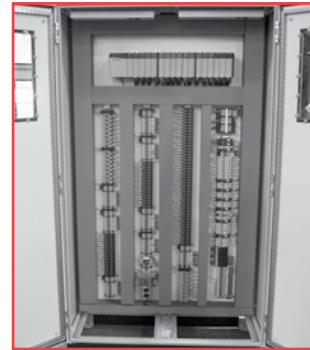
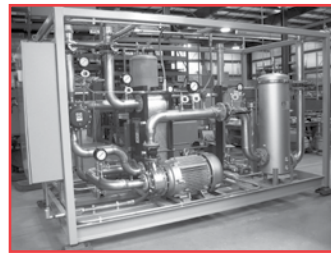
## CONTROL VALVES & INSTRUMENTATION

- Pressure, temperature, level, flow and analytical measurements
- Automated ball, butterfly, globe and plug assemblies
- RTD's, thermocouples, gauge and seal assemblies



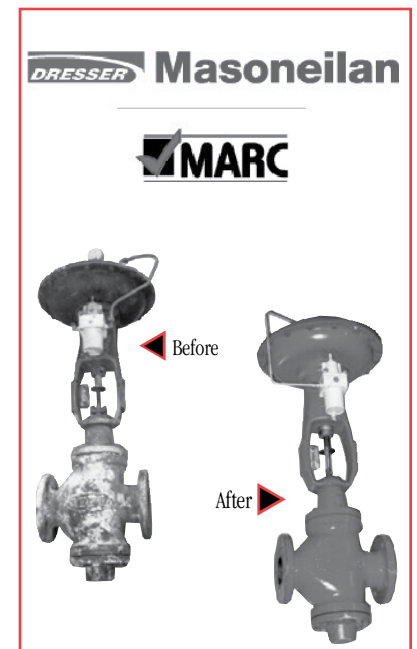
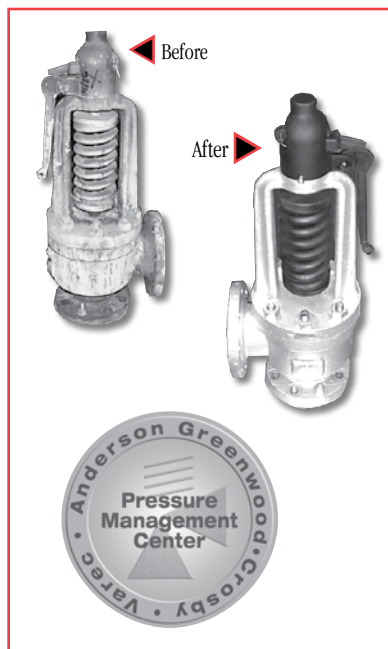
## ENGINEERED PRODUCTS GROUP

- UL Certified panel design, fabrication and field start-up
- Skid mounted systems fully tested and installed
- System start-up support and shut-down/outage assistance



## CERTIFIED VALVE SERVICE

- A certified and approved pressure relief valve and control valve assembly and repair facility
- New pressure relief and control valve testing and field service
- SEVCO Computerized Valve Survey System
- Dresser Valv Keep System



After hours Emergency Service: 207.872.4779



**Call Toll Free: 800.452.1928**



**Webb Kentrol/Sevco**

Specialists in Automated Valves, Process Controls, Overpressure Protection, and Engineered Systems.



**CONTROL EQUIPMENT CORPORATION**

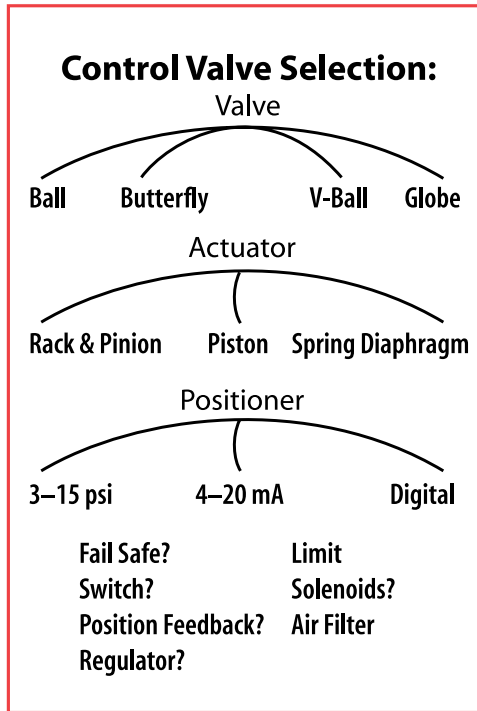
# Products & Services

## CONTROL VALVE SIZING REQUIRED INFO:

- Inlet pipe size
- Outlet pipe size
- Schedule
- Media (water, steam, pulp, etc.)
- (P1) Upstream pressure
- (P2) Downstream pressure
- (Q) Flow (in GPM, #/hr, etc.)
- (T1) Temperature

## INSTRUMENTATION SELECTION REQUIRED INFO:

- Application – Level, Flow, Temp, Pressure, Liquid Analysis
- Media
- Line/tank size
- Pressure range
- Flow range
- Temperature
- Available power (AC/DC)
- Environment: hazardous or corrosive
- Special certifications (3A, Oil Free, Life Sciences)
- Process connection



Scott Varney  
sva@fwwebb.com



Chad Collier  
chc@fwwebb.com



Parrish Lovell  
par@fwwebb.com



Nate Grady  
nate@fwwebb.com



Dan Desilits  
ddd@fwwebb.com



Cynthia Berkovsky  
ceb@fwwebb.com



Anisa Meigs  
Anisa.Meigs@fwwebb.com



Bob Richard  
Robert.Richard@fwwebb.com

## NEW PRESSURE RELIEF VALVE REQUIRED INFO:

- Valve type & manufacturer
- Serial number
- ASME (or other stamps on valve)
- Set pressure (PSIG)
- Operating pressure (PSIG)
- Back pressure (PSIG)
- Required capacity (Units)
- Type of fluid (steam, air, vapor, water)
- Inlet size/type
- Outlet size/type
- Other accessories needed
  - Bolted cap
  - Packed cap
  - Plain lifting lever
  - Weathershield
  - Spring cover



Cord Collier  
col@fwwebb.com



Gary Thibodeau  
ggt@fwwebb.com

## Instrumentation Services

- Installation and Calibration
- PID Loop Tuning
- Troubleshooting
- System Start-up Support
- Commissioning Support

## Control Panel Design and Fabrication

- CAD Design
- UL Certification
- NEMA 12/4/4x & Class 1, Div.1
- Relay Protection Panels
- PLC Cabinets
- Complete Control Rooms

## Automated/Safety Valve Services

- Masoneilan Authorized Repair Center
- Automated Valve Calibration
- Automated Valve Repair and Rebuilding
- Automated Valve Diagnostic Surveys
- Automated Valve Optimization Software
- Predictive Maintenance Software
- Authorized Crosby Valve "Pressure Management Center"
- Holder of Certificates of Authorization for the use of "V", "UV", and "VR" symbol stamps

## Engineered Systems

- CAD Designed Skid Mounted Process Systems
- Temperature Control Skids/Modules
- Utility Boiler Burner Valve Racks
- Instrument Racks

## Energy Conservation

- Sevco's "4 Phase Steam Program"
- Internet Based SEVCO Computerized Valve Survey System (SCVSS)
- Steam Trap, Unit Heater and System Surveys

37 Heywood Road  
Winslow, Maine 04901  
207.873.7741  
800.452.1928  
800.533.1172  
Fax: 207.872.5643

37 South Maple Street  
Bellingham, MA 02019  
508.865.5600  
Fax: 508.966.1999

P.O. Box 330  
Cazenovia, NY 13035  
315.655.9700  
Fax: 315.655.9701

 **www.kentrol.com**  
**sevco.fwwebb.com**